

SUMMER 2021



FARM TECH SUPPLIES

COMPACT TRACTOR ATTACHMENTS



Affordable Compact Tractor Attachments



Fully CE Certified

All products comply with EU safety standards and have supporting CE certification



12-Month Parts Warranty

All machinery is provided with a 12-month parts warranty so that customers can buy with complete confidence



Quality Customer Support

Advice from our team of experienced engineers with year-round mechanical support and testing in our workshop



Spare Parts

We keep spare parts on the shelf to complement our extensive range of agricultural products



Large Stocks

We stock a variety of attachments in our warehouse. We are continually introducing products to our existing ranges



Delivered Across the UK



FTS offers a wide range of compact tractor attachments aimed primarily at smallholders – with good-quality attachments at affordable prices.



Winton offers a range of groundcare machinery that takes the typical mower and enhances the key components such as bearings, gearboxes and blades. Upgraded machinery for reliable and regular use.



Agrint is the customised products division of Del Morino SRL in Italy, which has been supplying high-quality groundcare machinery for over 140 years.



William Hackett's popular chain harrows are produced in the UK. Its factory in the West Midlands has been manufacturing for over 125 years.



Deleks in Italy supplies and distributes agricultural and forestry machinery. It focuses on quality and performance tractor attachments.

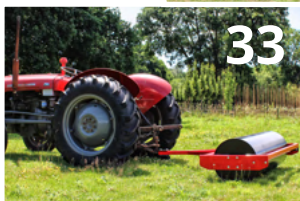


Oxdale Products specialises in British-made log splitters and other agricultural products. It supplies a wide range of attachments to suit both the commercial and domestic market.



Fleming Agri Products has 158 years of manufacturing experience and is one of Europe's leading manufacturers of agricultural equipment.

Contents



4	Topper Mowers
5	Finishing Mowers
6	Compact Flail Mowers
7	Flail Mowers
8	Side-Shift Flail Mowers
9	Verge Flail Mowers
10	Flail Hedge Cutters
11	ATV Flail Mower
12	Power Harrows
13	Rotovators
14	Stone Buriers
15	Wood Chipper
16	Post-Hole Borers
17	Bale Spike
18	Agricultural Tipping Trailers
19	Transport Boxes
20	Box Blades & Grader Blades
21	Land & Menage Leveller
22	Hydraulic Snow Blade
23	Spreader
24	Paddock Blade
25	Landscape Rakes
26	Compact Aerator
27	Ripper & Pipe Layer
28	Cultivator
29	Ploughs
30	Pallet Forks
31	Drag Harrows
32	Framed Harrows
33	Field Rollers
34	Log Splitters
35	Accessories & Spare Parts

Ideal for cutting a variety of grasses, light scrub and saplings in pasture and paddock areas. Perfect for use on smallholdings with horses. Fully adjustable skids for regulating cutting height.

Suitable for most compact and medium-sized tractors. All of our topper mowers are supplied complete with a shear bolt protected PTO shaft.



WTM110

 Winton



Width (cm):	110
Tractor Range (hp):	16-25
Cutting Height (cm):	5-25
Weight (kg):	175

B-FTOP6

 Fleming



Width (cm):	180
Tractor Range (hp):	35-50
Cutting Height (cm):	5-25
Weight (kg):	323

WTM140

 Winton



Width (cm):	140
Tractor Range (hp):	23-40
Cutting Height (cm):	5-25
Weight (kg):	205

“ All aspects of the deal were great – good communications, the price was right, delivery was on time, your delivery driver was really helpful with the handover and setup, and the topper is brilliant! ”

WTM160

 Winton



Width (cm):	160
Tractor Range (hp):	25-50
Cutting Height (cm):	5-25
Weight (kg):	220

Steve G. **Hampshire**

This style of mower is best suited to level areas of regularly maintained grass. The three rotary blades create a close-cut finish and the height-adjustable wheels help to stabilise and leave an even cut.

We recommend for use on golf courses, lawns, campsites and sports fields.



WFM120

 Winton



Width (cm):	120
Tractor Range (hp):	16-30
Cutting Height (cm):	2-8
Weight (kg):	178

EA215

 Agrit



Width (cm):	215
Tractor Range (hp):	25-55
Cutting Height (cm):	2-9
Weight (kg):	289

WFM150

 Winton



Width (cm):	150
Tractor Range (hp):	20-45
Cutting Height (cm):	2-8
Weight (kg):	187



WFM180

 Winton



Width (cm):	180
Tractor Range (hp):	25-55
Cutting Height (cm):	2-8
Weight (kg):	202

“ Thank you Farm Tech Supplies. ”
The machine arrived and went straight to work. The mower leaves a great finish and is very easy to operate.

David S. **Derbyshire**

These models are perfect for narrow or sub-compact tractors 12hp and up and have a lightweight body for lower-power tractors.

Both Winton and Agrint ranges are suitable for cutting pasture and paddock areas and are ideal for maintaining grasses of various lengths and thicknesses.



WCF85

 Winton



Width (cm):	85
Tractor Range (hp):	12-20
Cutting Height (cm):	3-8
Weight (kg):	110

MIST132

 Agrint



Width (cm):	132
Tractor Range (hp):	18-28
Cutting Height (cm):	3-10
Weight (kg):	158

WCF105

 Winton



Width (cm):	105
Tractor Range (hp):	15-25
Cutting Height (cm):	3-8
Weight (kg):	130

MIST158

 Agrint



Width (cm):	158
Tractor Range (hp):	20-35
Cutting Height (cm):	3-10
Weight (kg):	179

“ Thank you for your professional service. Flail mower arrived today, couldn't resist hooking it up and giving it a go. Very impressed with the quality of the cut, it's exactly what I was after and more. ”

Dean H. **Leicestershire**

The EFG range offers a robust build for larger sub-compact and compact tractors. These models are great for smallholders.

The heavy hammer blades are perfect for cutting tough brambles and longer grass. The spiral blade layout will also leave a fine lawn finish if regular cutting is undertaken.

The Winton range is also fitted with larger gearboxes and blades, making the machines heavy duty in all situations.



EFG125

FTS FTS



Width (cm): 125
 Tractor Range (hp): 16-35
 Cutting Height (cm): 3-8
 Weight (kg): 260

EFG145

FTS FTS



Width (cm): 145
 Tractor Range (hp): 25-40
 Cutting Height (cm): 3-8
 Weight (kg): 290



WFL105

W Winton



Width (cm): 105
 Tractor Range (hp): 18-30
 Cutting Height (cm): 3-8
 Weight (kg): 210

WFL125

W Winton



Width (cm): 125
 Tractor Range (hp): 20-40
 Cutting Height (cm): 3-8
 Weight (kg): 244

WFL145

W Winton



Width (cm): 145
 Tractor Range (hp): 25-50
 Cutting Height (cm): 3-8
 Weight (kg): 284

WFL175

W Winton



Width (cm): 175
 Tractor Range (hp): 30-55
 Cutting Height (cm): 3-8
 Weight (kg): 309

The WHF flail mowers share the same specifications as the WFL range with the addition of the ability to offset the mower. This is achieved through the hydraulics of the tractor and enables movement of the mower to extend into hard-to-reach areas. This requires one double-acting hydraulic spool.

The MTP range has all the benefits of the standard Mistral flail mowers, this upgraded model features a manual side-shift.



WHF145

 Winton



Width (cm):	145
Tractor Range (hp):	25-50
Cutting Height (cm):	3-8
Weight (kg):	322

MTP132

 Agrint



Width (cm):	132
Tractor Range (hp):	18-28
Cutting Height (cm):	3-10
Weight (kg):	170

WHF175

 Winton



Width (cm):	175
Tractor Range (hp):	30-55
Cutting Height (cm):	3-8
Weight (kg):	350

MTP158

 Agrint



Width (cm):	158
Tractor Range (hp):	20-35
Cutting Height (cm):	3-10
Weight (kg):	196

WHF200

 Winton



Width (cm):	200
Tractor Range (hp):	35-60
Cutting Height (cm):	3-8
Weight (kg):	451

Winton verge flail mowers have hydraulically operated offset cutting heads perfect for cutting verges, tricky grassed areas and low hedges. As well as full upwards vertical movement at 90 degrees, they can be used at a 45-degree angle for ditch and verge cutting.

The offset function is suitable for UK road use. Requires two double-acting hydraulic spools to operate.



WVF130

W Winton



Width (cm):	130
Tractor Range (hp):	30-45
Cutting Height (cm):	3-8
Weight (kg):	260

WVF150

W Winton



Width (cm):	150
Tractor Range (hp):	35-55
Cutting Height (cm):	3-8
Weight (kg):	290



Winton flail hedge cutters are great for cutting hedges, ditches, embankments and roadsides. Fitted with Y-style blades and a PTO-driven hydraulic pump, which means the attachment is independent of the tractor's hydraulics. The fully adjustable arm make these machines very versatile. Great pieces of equipment for estates, smallholdings or paddocks.



WAM60

W Winton



Width (cm): 60
 Tractor Range (hp): 20-40
 Cutting Height (cm): Max. 230
 Weight (kg): 260



WAM80

W Winton



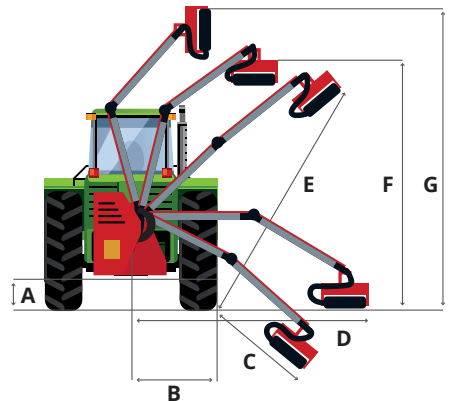
Width (cm): 80
 Tractor Range (hp): 25-45
 Cutting Height (cm): Max. 230
 Weight (kg): 275

WAM100

W Winton



Width (cm): 100
 Tractor Range (hp): 35-50
 Cutting Height (cm): Max. 230
 Weight (kg): 300



Our ATV flail mower is a great solution for non-tractor owners. Ideal for regular grass maintenance, it is quick and simple to operate with a 15hp Loncin petrol engine and pull/electric start.

Recommended for use at walking speed on level areas of land. Can cope with maintained grass but is not best suited to overgrown areas, brambles or woody materials.



G-AFL120

FTB FTS



Width (cm):	120
Engine (hp):	15
Cutting Height (cm):	3-10
Weight (kg):	230



These power harrows are designed for less stony/rocky areas with no grass and are essential for aerating the ground, which then enables the soil to gain warmth quicker so that planted materials can grow in healthier conditions.

The steel blades aggressively churn the soil and evenly distribute it over the entire working width. The roller gently levels off the aerated soil to create a perfect seedbed.



WPH130

 Winton



Width (cm):	130
Tractor Range (hp):	25-40
Tilling Depth (cm):	15
Weight (kg):	274

WPH170

 Winton



Width (cm):	170
Tractor Range (hp):	36-60
Tilling Depth (cm):	15
Weight (kg):	345



Rotary tillers are ideal for tilling and levelling the ground. These machines break up compacted soil on allotments ready for planting. Skids are height adjustable for flexible use and rear flap creates a smooth level finish to the tilled soil.

All three ranges are suitable for the uses above. The CTR and WRT ranges are a heavier-duty option for larger compact tractors.



G-FTL085

FTS FTS



Width (cm): 85
 Tractor Range (hp): 12-20
 Tilling Depth (cm): 9
 Weight (kg): 155

WRT125

W Winton



Width (cm): 125
 Tractor Range (hp): 25-40
 Tilling Depth (cm): 15
 Weight (kg): 285

G-FTL105

FTS FTS



Width (cm): 105
 Tractor Range (hp): 15-22
 Tilling Depth (cm): 9
 Weight (kg): 195

WRT150

W Winton



Width (cm): 150
 Tractor Range (hp): 30-55
 Tilling Depth (cm): 15
 Weight (kg): 320

G-FTL125

FTS FTS



Width (cm): 125
 Tractor Range (hp): 20-30
 Tilling Depth (cm): 9
 Weight (kg): 210

CTR125

Ag Agrint



Width (cm): 125
 Tractor Range (hp): 18-30
 Tilling Depth (cm): 15
 Weight (kg): 164

G-FTL155

FTS FTS



Width (cm): 155
 Tractor Range (hp): 25-40
 Tilling Depth (cm): 9
 Weight (kg): 295

CTR145

Ag Agrint



Width (cm): 145
 Tractor Range (hp): 25-40
 Tilling Depth (cm): 15
 Weight (kg): 176

WSB machines rotovate the soil to 12cm depth and bury stones and debris whilst also levelling the ground for a smooth new seedbed. The heavier stones and other debris are placed underneath the lighter-tilled soil which then lays on the top.

The roller section runs over and levels the tilled soil, leaving the area ready for grass seeding.



WSB105

 Winton



Width (cm):	105
Tractor Range (hp):	20-28
Tilling Depth (cm):	12
Weight (kg):	330

WSB125

 Winton



Width (cm):	125
Tractor Range (hp):	25-30
Tilling Depth (cm):	12
Weight (kg):	355



WSB145

 Winton



Width (cm):	145
Tractor Range (hp):	30-45
Tilling Depth (cm):	12
Weight (kg):	380

“ I got the stone burier up and running yesterday. I am amazed at how good the finish is. A great piece of kit for the money. ”

James S. **Sussex**

The WWC is a versatile machine that makes the perfect addition to any smallholding, useful for clearing woodlands throughout the year.

The heavy-duty and highly resilient steel frame makes this wood chipper a great choice for smallholdings and estates.



WWC

 Winton



Max Width (inch):	5
Tractor Range (hp):	14-48
Feed:	Manual
Weight (kg):	195



The Winton post-hole borers are perfect for installing fencing around paddocks. The implements are quick and simple to fit and operate. The borers can create holes up to 3ft deep.

Supplied complete with a heavy-duty gearbox and reinforced framework.



WHB06

 Winton



Auger Width (inch):	6
Tractor Range (hp):	20-50
Max Hole Depth (cm):	90
Weight (kg):	138

WHB09

 Winton



Auger Width (inch):	9
Tractor Range (hp):	20-50
Max Hole Depth (cm):	90
Weight (kg):	148

WHB12

 Winton



Auger Width (inch):	12
Tractor Range (hp):	20-50
Max Hole Depth (cm):	90
Weight (kg):	158

The Winton bale spike is a simple 3-point linkage attachment for transporting hay, straw and silage bales. The large central spike is fitted to an adjustable bracket which can be moved into varying positions to suit the size and shape of the bale.

Suitable for larger compact tractors with a lower linkage width of minimum 85cm.



WBS01

 Winton



Max Weight (kg):	450
Tractor (hp):	20-50
Top Spike (cm):	100
Weight (kg):	35



Our tipping trailers are perfect for moving a wide range of items. Fitted with turf tyres to reduce tread marks. The trailers require a hydraulic spool on the tractor to operate the upwards lift of the trailer.

Ideal for moving logs, muck, hay and leaves around your estate. These trailers are not designed for on-the-road use.



WTL15

 Winton



Internal Width (cm):	120
Internal Length (cm):	194
Carrying Capacity (kg):	1500
Weight (kg):	250

B-FTR2

 Fleming



Internal Width (cm):	136
Internal Length (cm):	250
Carrying Capacity (kg):	2000
Weight (kg):	496



B-FTR2MS

 Fleming

Mesh sides for the B-FTR2

“ I had been searching for a tipping trailer, then came across FTS and found exactly what I was looking for. Nice and simple to use with the wind-up stand and a great price. ”

Alex T. **Hereford**

Transport boxes are ideal for use around smallholdings moving a range of items. The attachments are simple to use with a manual tipping lever.

The boxes have a front scoop for backing into soft materials when the rear panel is removed.



TTB120



FTS



Internal Width (cm):	110
External Width (cm):	120
Carrying Capacity (kg):	250
Weight (kg):	86

TTB150



FTS



Internal Width (cm):	140
External Width (cm):	150
Carrying Capacity (kg):	350
Weight (kg):	105



Box grader blades are designed for levelling ground and tracks. The height-adjustable ripper tines are perfect for ripping the soil to a variety of depths. Alternatively the tines can be set at the highest point or removed to use the implement as a grader blade.

The grader blade models can be rotated 360 degrees using a simple pivoting mechanism for greater flexibility.



WRB4

 Winton


Width (cm):	120
Tractor Range (hp):	16+
Tine Quantity:	4
Weight (kg):	190

GB5

 FTS


Width (cm):	150
Tractor Range (hp):	14-35
Rotation (degrees):	360
Weight (kg):	62

WRB5

 Winton


Width (cm):	150
Tractor Range (hp):	20+
Tine Quantity:	5
Weight (kg):	250

GB6

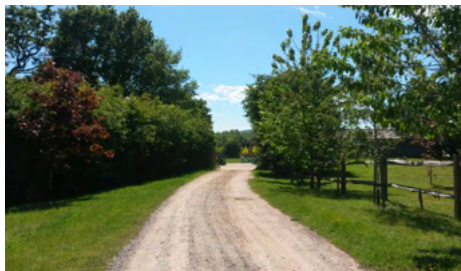
 FTS


Width (cm):	180
Tractor Range (hp):	18-50
Rotation (degrees):	360
Weight (kg):	76

WRB6

 Winton


Width (cm):	180
Tractor Range (hp):	25+
Tine Quantity:	6
Weight (kg):	310



The Fleming land leveller is a highly effective piece of equipment, ideal for land reclamation and for leaving the ground with a level surface with evenly distributed material.

Easily reversible for smooth levelling of sand menages, horse gallops etc.



B-FLL5

Fleming



Width (cm):	150
Tractor (hp):	20-40
Reversible	Yes
Weight (kg):	70



Our hydraulic scraper blade is ideal for use around smallholdings to be used for snow clearance, yard scraping or for levelling ground. The blade can be angled using the tractor hydraulics and has a rubber material scraper. Can be used as a snow plough in winter or as a grader blade in the summer.

Requires one double-acting hydraulic pool.



WSP150

w Winton



Width (cm):	150
Tractor (hp):	24-40
Angle Adjustment (degrees):	28
Weight (kg):	170



The Fleming fertiliser spreader is made with the highest-quality materials. The spreader is treated with rust inhibitor and coated with anti-corrosive paint, which provides improved durability and a longer life. Used for spreading rice, wheat, cereals, dry salt and sand. Offers an adjustable spreading width of 6-10m.

Fleming offers the option of fitting a salt spreader kit for winter use.



B-FS500



Fleming



Capacity (l):	500
Tractor (hp):	14-40
Fin Quantity:	4
Weight (kg):	60



The paddock blade is the UK's original and favourite paddock cleaner — a solid, reliable and quick horse manure collector that makes paddock cleaning easy. Designed to work on both flat, uneven, rough and undulating terrain.

Can be towed behind any ATV, UTV, 4x4 or tractor. Quick and simple to fit and operate.



B-PB

FTS FTS



Blade Width (cm):	110
Blade Length (cm):	110
Blade Height (cm):	22
Weight (kg):	40

“ One of the best tools ever. ”
 Easy to use, easy to tow and makes light work of the fields. Saves tonnes of time, picks up every bit and even levels the field out as you go.

Joe C. **Sussex**



These attachments are perfect for aerating and weeding. The heads can be angled or reversed for better control in more awkward-to-reach areas. Primarily designed for levelling and spreading of soil, chippings, shingle and gravel.

The sprung tines will also collect cut grass, debris and stones from paddock areas. The tines offer a scarifying effect whilst they collect materials.



WLR5

W Winton



Working Width (cm):	150
Tractor (hp):	20-45
Width:	152
Weight (kg):	126

WLR6

W Winton



Working Width (cm):	180
Tractor (hp):	25-55
Width:	182
Weight (kg):	185



This aerator attachment relieves soil compaction and promotes healthier root growth, which in turn improves growth and quality of grass. Using the aerator regularly also improves drainage and reduces dependency on expensive artificial fertiliser use.

Features include a carrying rack for the addition of extra weight and the ability to adjust the rotor angle to suit the required terrain.



B-FAR5

 Fleming



Working Width (cm):	150
Tractor (hp):	30-60
Blade Quantity:	24
Weight (kg):	235



The ripper and pipe layer is ideal for laying water pipe or armoured cable. The attachment benefits from being both quick and easy to use.

The ripper can physically go down 24 inches, but the achieved depth depends on the tractor and soil type.



WRP1

 Winton



Blade Length (cm):	30
Tractor (hp):	15-35
Max Depth (cm):	60
Weight (kg):	45



“ The pipe layer worked like a dream, exactly as described and hardly visible when we had finished which, by the way, was a remarkably quick job. A superb piece of kit which I am sure will come in handy time and again. ”

Elaine R. **Dorset**

Designed to disturb the soil in careful patterns, sparing the crop plants but disrupting the weeds. Can be used for loosening and aerating soil to a depth of approximately 35cm depending on the type of land and the horsepower of the tractor.

Cultivating reduces the build-up of stagnated water and helps to distribute moisture among worked soil for improved fertility.



DE120/5

 Deleks



Working Width (cm):	120
Tractor (hp):	16-35
Tine Quantity:	5
Weight (kg):	128



The Deleks ploughs are specifically designed for use with compact tractors. The narrow design allows plowing close to trees without disturbing saplings. The gauge wheel allows the plough's tilt and depth to be adjusted easily to maximise usage.

The DRP25 model features a manual reversible feature which doubles the ploughing capacity to save time and fuel.



DP16



Cut Width (cm):	30
Tractor (hp):	15-35
Depth Range (cm):	16-22
Weight (kg):	50

DRP25



Cut Width (cm):	30
Tractor (hp):	18-40
Depth Range (cm):	16-22
Weight (kg):	80



Pallet forks are ideal for moving a range of items around smallholdings and farms. The attachments are easy to use and can be folded away securely for storage.

These implements have width-adjustable forks for greater flexibility.



D300

 Deleks



Lift Capacity (kg):	300
Tractor Range (hp):	14-35
Weight (kg):	45

D700

 Deleks



Lift Capacity (kg):	700
Tractor Range (hp):	25-70
Weight (kg):	110



These drag harrows are ideal for use around smallholdings and paddocks. Simple to fit and use, they attach to a wide range of vehicles including ATVs and 4x4s. The 3-way harrow tines give an aggressive harrow, then a slightly less vigorous harrow when spun around and finally a light harrowing when upturned.

Great for levelling mole hills. They can also be used to spread manure and aerate soil in fields.



B-HC04



William Hackett



Bed Width (cm):	120
Bed Depth (cm)::	152
Weight (kg):	37

B-HC06



William Hackett



Bed Width (cm):	180
Bed Depth (cm)::	152
Weight (kg):	51



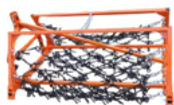
These framed harrows are ideal for use around smallholdings and paddocks. They can be folded to fit through gateways and for storage and attaches to a tractor linkage for moving between fields. The 3-way harrow tines give an aggressive harrow, then a slightly less vigorous harrow when spun around and finally a light harrowing when upturned.

Great for levelling mole hills, spreading manure and aerating the soil.



B-HF04

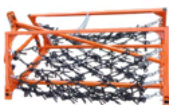
 William Hackett



Working Width (cm):	120
Base Width (cm):	120
Wing Width (cm):	N/A
Weight (kg):	115

B-HF08

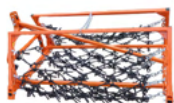
 William Hackett



Working Width (cm):	245
Base Width (cm):	120
Wing Width (cm):	64
Weight (kg):	145

B-HF06

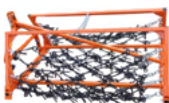
 William Hackett



Working Width (cm):	180
Base Width (cm):	120
Wing Width (cm):	38
Weight (kg):	125

B-HF12

 William Hackett



Working Width (cm):	365
Base Width (cm):	120
Wing Width (cm):	115
Weight (kg):	175

“Thank you for the very efficient service. I have just taken delivery of my new harrows, I found your local dealer was very helpful and easy to deal with. They also offered great advice on how to setup and use the attachment.”

Gerry B. **Lancashire**

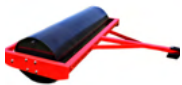
Field rollers are perfect for levelling out paddocks after topping or harrowing throughout the year. Also great for sand schools, sports pitches and tracks. The field rollers attach to tractors with the simple pin hitch. Ball hitch also available to fit to ATVs and 4X4 vehicles.

The Fleming model features a 3-point linkage to attach to larger compact tractors.



FR5

FTS FTS



Working Width (cm):	152
Overall Width (cm):	166
Laden Weight (kg):	515
Weight (kg):	210

B-FRL66

Fleming



Working Width (cm):	198
Overall Width (cm):	218
Laden Weight (kg):	860
Weight (kg):	320

FR6

FTS FTS



Working Width (cm):	182
Overall Width (cm):	196
Laden Weight (kg):	610
Weight (kg):	245



“ The packaging was great and the roller arrived in good order ready to work. Just the job for towing behind our UTV, we used it straight away and it worked a treat, thanks for all your help. ”

Mel H. **Bedfordshire**

These tractor-driven log splitters are ideal for smallholdings and estates. They can be used all year round by preparing logs for the winter and then clearing out woodlands. Designed to fit a range of compact tractors and tackle a variety of log-splitting jobs.

Available with either hydraulic or PTO power sources.



B-LSBH



Splitting Force (tn):	10
Power:	Hydraulic
Weight (kg):	64

B-LSBP



Splitting Force (tn):	10
Power:	PTO
Weight (kg):	120



We are proud to offer a comprehensive range of spare parts for our attachments. Most items are held in stock in the UK and are usually available for next working day delivery. We also offer a wide range of service packs for our more popular attachments.



Upgrades & Add-ons

G-FTL rotovators upgrade to shear bolt PTO shaft

G-FTL rotovators upgrade to slip clutch PTO shaft

WSB stone buriers upgrade to slip clutch PTO shaft

WFM finishing mowers upgrade to shear bolt PTO shaft

FR rollers upgrade from pin hitch to 50mm tow ball hitch

Towing A-frame for compact tractors with 50mm ball hitch